

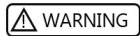
OPERATING AND MAINTENANCE INSTRUCTIONS

FOR ALLY FIRE TECH #715

SELECTABLE GALLONAGE NOZZLE

GENERAL INFORMATION

- ✧ Maximum nozzle operating pressure: 230PSI (16 Bar/1600kPa)
- ✧ Optimum flow is achieved at 100PSI (7bar/700kPa) at the nozzle
- ✧ At pressure below 100PSI (7bar), the nozzle will deliver reduced flow and reach
- ✧ Adequate flows and pressure should be maintained for relevant fire condition



Always open and close the shut-off valve slowly. Sudden opening or closing of the shut-off valves can cause water hammer and subsequent damage to the hose or couplings



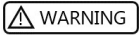
Do not use the nozzle on electrical fires.



Do not over-tighten the nozzle when connecting to fitting.



Do not alter the nozzle in any manner.



For use with water and firefighting foam only

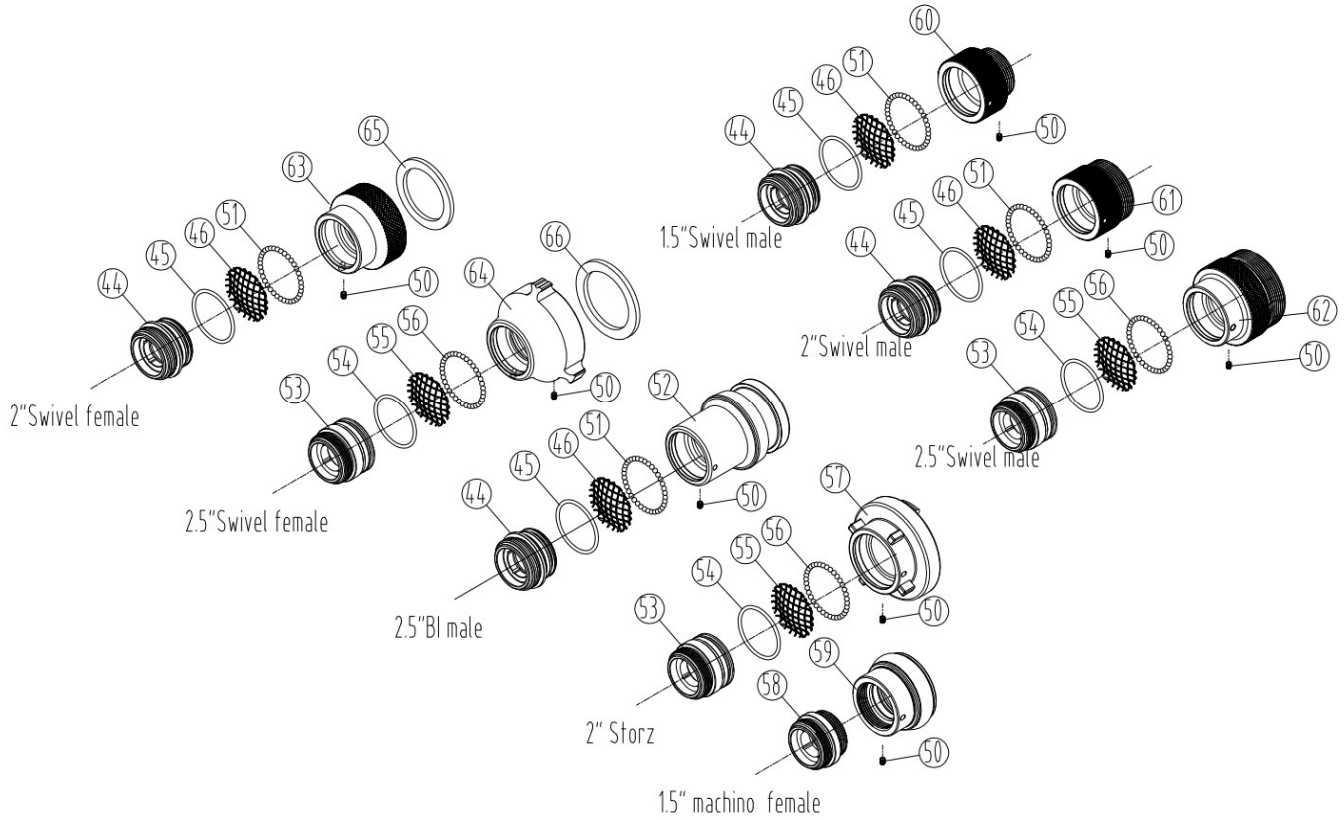
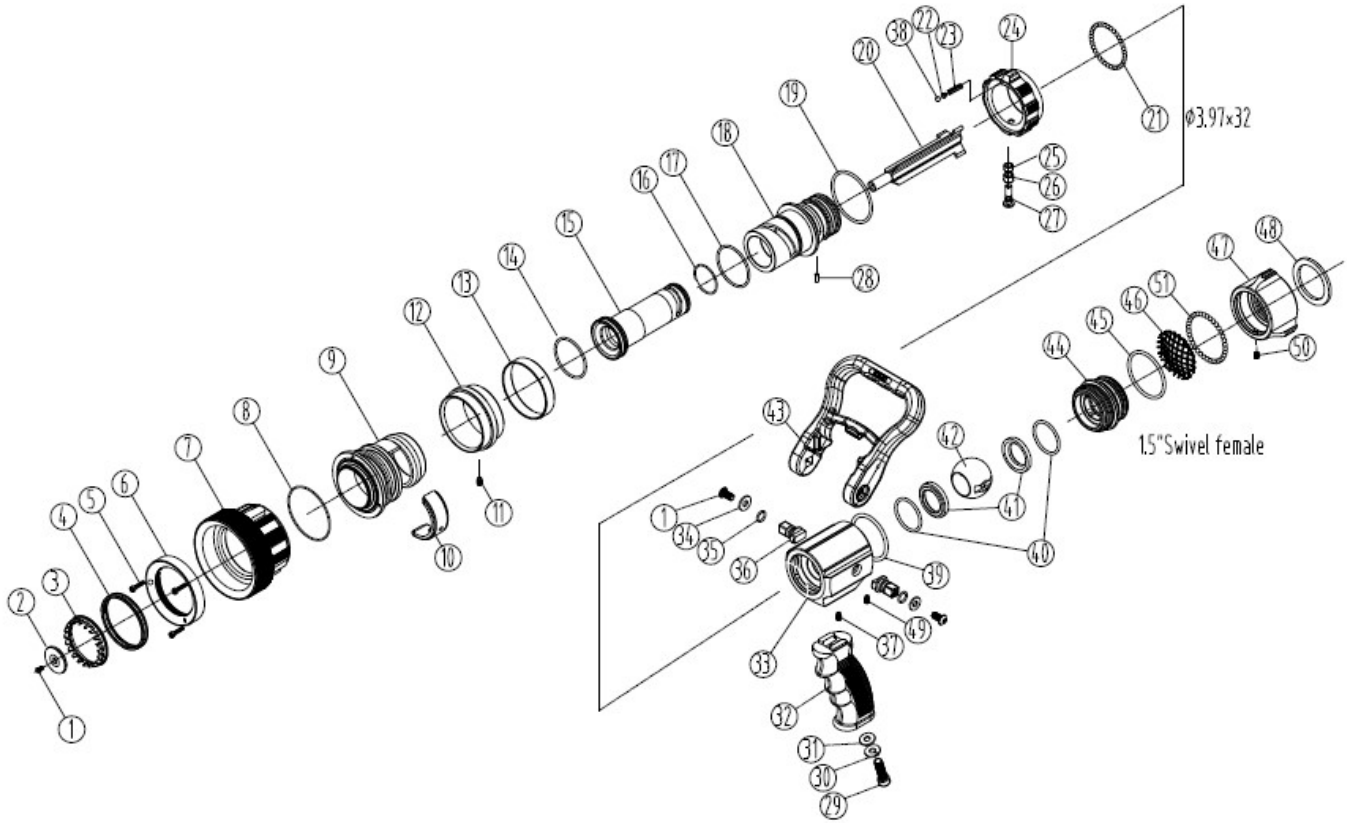
OPERATING INSTRUCTION

- ✧ Open and close the shutoff slowly at all times
- ✧ To open the nozzle, pull the “43” handle towards the inlet
- ✧ To close the nozzle, push the “43” handle towards the outlet
- ✧ To change the spray pattern; rotate the bumper clockwise (right) for a straight stream, or counterclockwise (left) for a wide homogeneous fog pattern
- ✧ To change the flow setting: slowly rotate the flow selection right to the required flow, and adjust the pump pressure to deliver 100 PSI (7bar) at the nozzle

- ✧ To flush the nozzle of any debris or blockages that have passed through the inlet screen, rotate the flow selection ring to the FLUSH settings and hold until blockage at the nozzle tip is removed.

MAINTENANCE

- ✧ Nozzles should be inspected before and after each use to ensure that all parts are in a satisfactory working condition.
- ✧ If any one of the following problems are encountered while in use, the nozzle should be withdrawn from service and repaired:
 1. Controls that are inoperable or difficult to operate
 2. Excessive wear
 3. Water leakage from joints
 4. Broken spinning teeth
 5. Loose or missing screws
- ✧ Periodically flushing the nozzle with clean water, and removes any build-up of dirt from the exterior of the nozzle.
- ✧ If lubrication is required, a good quality silicon based grease should only be used very sparingly. Too much grease will attract a build-up of dirt and grit.
- ✧ Regularly check any external screws for tightness, tighten as required with the addition of a good quality thread locker (i.e. Loctite 262)



NOZZLE #715

PART NO.		DESCRIPTION	QTY
1	18108000	Screw	3
2	22004110	Baffle	1
3	13000010	Teeth Turbine	1
4	14009010	Teeth Bearing	2
5	18103000	Screw,CAP	3
6	22000110	Retaining Ring	1
7	14002010	Bumper Black	1
	14002011	Bumper Red	1
8	14000100	O-Ring	1
9	22001110	Pattern Sleeve	1
10	14003010	Cam Insert	1
11	18001000	Socket Set Screw	1
12	22002110	Pattern Sleeve Ring	1
13	22003010	Pattern Band	1
14	14000090	O-Ring (AS-030)	1
15	22005110	Discharge Tube	1
16	14000070	O-Ring(AS-025)	1
17	14000160	O-Ring(AS-130)	1
18	22006110	Nozzle Body	1
19	14000140	O-Ring(AS-128)	1
20	22007010	Stem	1
21	17000001	Ball Bearing	32
22	14017000	Cam	1
23	17003008	Compression Spring	1
24	42009110	Gallorage Control Ring	1
25	11017010	Roller	1
26	11018010	Bush	1
27	18000000	Screw	1
28	18402000	Pin	1
29	18101020	Screw	1
30	18501000	Detent Washer	1
31	18500100	Washer	1
32	14006000	Pistol Grip Black	1
	14006001	Pistol Grip White	1
	14006002	Pistol Grip Red	1
	14006003	Pistol Grip Blue	1
	14006004	Pistol Grip Yellow	1
	14006005	Pistol Grip Green	1
	14006006	Pistol Grip Orange	1
33	32010011	Valve Body	1
34	18500090	Washer	2
35	14000060	O-Ring (AS-012)	2
36	22013010	Trunnion	2
37	18104070	Socket Set Screw	1
38	14012020	Plastic Ball	1
39	14000220	O-Ring (P-046)	1
40	14000130	O-Ring (AS-125)	2
41	14008010	Seat	2
42	11019010	Ball	1

PART NO.		DESCRIPTION	QTY
43	14005010	Shutoff Handle Black	1
	14005011	Shutoff Handle White	1
	14005012	Shutoff Handle Red	1
	14005013	Shutoff Handle Blue	1
	14005014	Shutoff Handle Yellow	1
	14005015	Shutoff Handle Green	1
	14005016	Shutoff Handle Orange	1
44	22011110	Adapter	1
45	14000210	O-Ring(P-042)	1
46	13002010	Screen	1
47	32012011	Swivel female 1.5 NH	1
	32012031	Swivel female 1.5 BSP	1
	32012051	Swivel female 1.5 NPSH	1
48	14001020	Gasket	1
49	18104080	Socket Set Screw	1
50	18104080	Socket Set Screw	1
51	17000001	Ball Bearing	34
52	22015110	Instantaneous Male Coupling-2.5" B	1
53	22011112	Adapter	1
54	14000230	O-Ring (3048)	1
55	13002040	Screen	1
56	17000000	Ball Bearing	32
57	22015070	Adapter(2" Storz)	1
58	22011113	Adapter	1
59	32031030	Adapter(1.5" machino female)	1
60	32012012	Swivel male 1.5 NH	1
	32012013	Swivel male 1.5 BSP	1
	32012014	Swivel male 1.5 NPSH	1
61	32012080	Swivel male 2 NH	1
	32012081	Swivel male 2 BSP	1
	32012082	Swivel male 2 NPSH	1
62	42012310	Swivel male 2.5 NH	1
	42012320	Swivel male 2.5 BSP	1
	42012330	Swivel male 2.5 NPSH	1
63	32012070	Swivel female 2 NH	1
	32012071	Swivel female 2 BSP	1
	32012072	Swivel female 2 NPSH	1
64	32012111	Swivel female 2.5NH	1
	32012121	Swivel female 2.5BSP	1
	32012131	Swivel female 2.5NPSH	1
	32012151	Swivel female 2.5BAT	1
	32012161	Swivel female 2.5WCT	1
65	14001060	Gasket	1
66	14001030	Gasket	1