



**FRONTIER**

**HI-FLO**

# **SELECTABLE NOZZLE**

## **USER GUIDE**



## OPERATING INSTRUCTIONS

### GENERAL INSTRUCTIONS

- Maximum operating pressure 580 PSI or 40 Bar
- At pressures below 100 PSI or 7 Bar, the nozzle will have reduced flow and reach. Be sure to have enough flow and pressure for the fighting conditions.
- Open and close shut-off valve slowly. Sudden opening or closing can cause water hammer
- Not for use on electrical fires
- Do not over tighten the nozzle on to the hose connection
- Do not alter the nozzle in any manner
- For use with water and firefighting foam only

### OPERATING INSTRUCTIONS

- Open and close the shut-ff slowly
- To open: pull the handle towards the inlet
- To close: push the handle towards the outlet
- To change the spray pattern: rotate the bumper. Rotate it clockwise for straight stream and counterclockwise for wide fog
- To change the flow setting: slowly rotate the index flow control ring to the required setting and adjust you fire engine to provide 100 PSI at the inlet of the nozzle
- To flush the nozzle: rotate the index flow control ring to the FLUSH setting

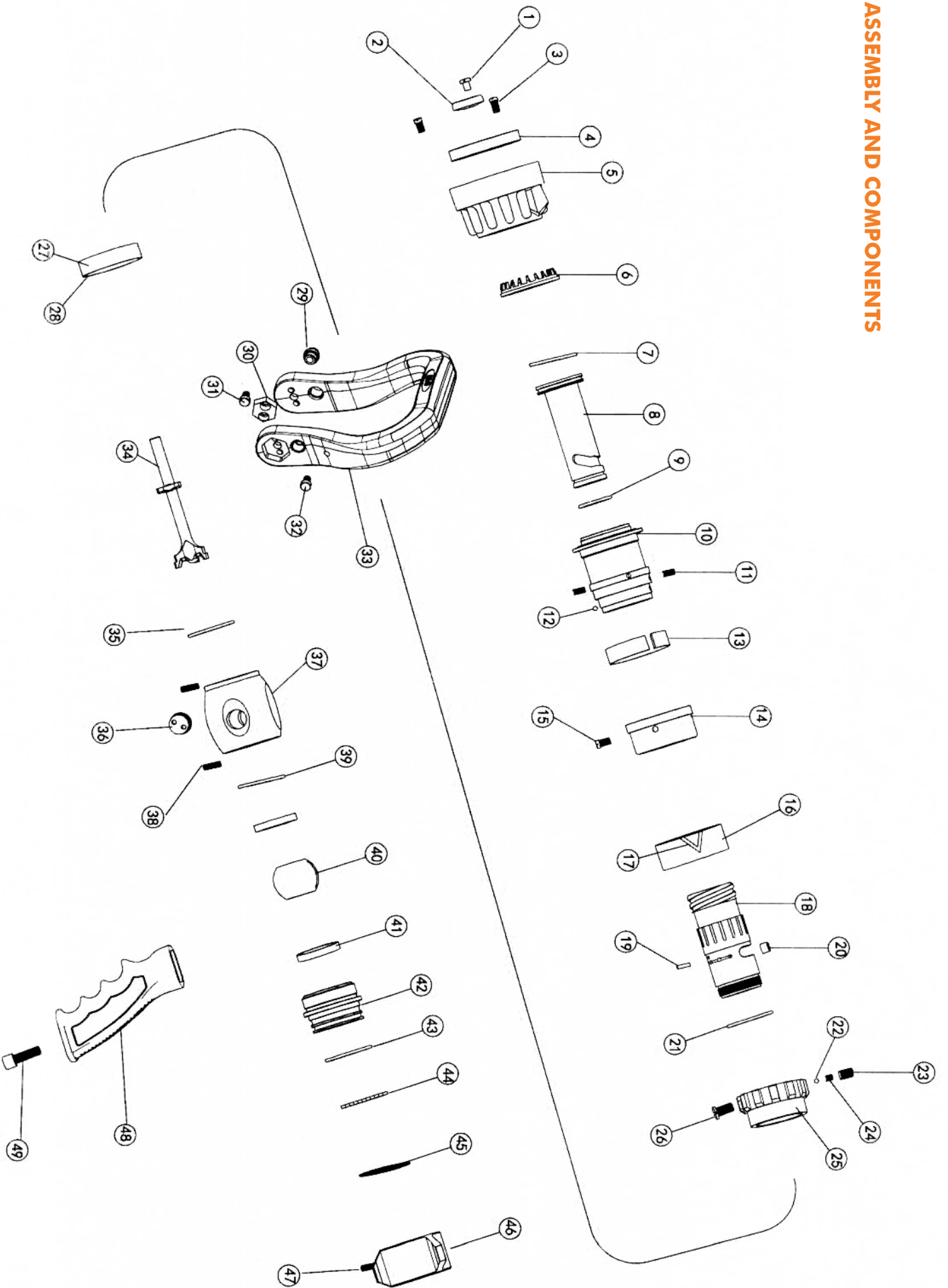
### MAINTENANCE

- The nozzle should be inspected before and after each use to ensure it is in good operating condition
- If you encounter the following situations, the nozzle should be taken out of service and repaired:
  - Controls that are either inoperable or difficult to operate
  - Excessive wear
  - Water leaks
  - Broken spinning teeth
- Periodically flush the nozzle with clean water and remove dirt from the nozzle
- Regularly check the baffle screw to be sure it is tight enough

## COMPONENTS LIST

Nº	DESCRIPTION	QTY	MATERIAL
1	Screw	1	Stainless Steel
2	Baffle	1	Aluminum Alloy
3	Screw	2	Stainless Steel
4	Retaining Ring	1	Aluminum Alloy
5	Bumper	1	HNBR
6	Spring Teeth	1	Stainless Steel
7	O-Ring	1	NBR
8	Discharge Tube	1	Aluminum Alloy
9	O-Ring	1	NBR
10	Pattern Sleeve	1	Aluminum Alloy
11	Screw	2	Stainless Steel
12	Steel Ball	1	Stainless Steel
13	Round Spring	1	Aluminum Alloy
14	Wear Ring	1	Aluminum Alloy
15	Screw	1	Stainless Steel
16	Indicating Band	1	Aluminum Alloy
17	Spring Mark	1	Laser
18	Nozzle Body	1	Aluminum Alloy
19	Pin	1	Stainless Steel
20	Roller	1	Brass
21	O-Ring	1	NBR
22	Steel Ball	1	Stainless Steel
23	Spring	1	Stainless Steel
24	Screw	1	Brass
25	Control Ring	1	Aluminum Alloy
26	Screw	1	Brass
27	Flow Rate		Laser
28	Indicating Band	1	Aluminum Alloy
29	Pin	1	Aluminum Alloy
30	Gasket	2	Aluminum Alloy
31	Screw	4	Stainless Steel
32	Screw	2	Stainless Steel
33	Handle	1	Dupont Nylon
34	Stem	1	Aluminum Alloy
35	O-Ring	1	NBR
36	Trunnion	2	Aluminum Alloy
37	Valve Body	1	Aluminum Alloy
38	Screw	2	Stainless Steel
39	O-Ring	1	NBR
40	Ball	1	Stainless Steel
41	Gasket	2	PTFE
42	Ball Seat	1	Aluminum Alloy
43	O-Ring	1	NBR
44	Steel Ball	43	Stainless Steel
45	Strainer	1	Stainless Steel
46	Swivel Inlet	1	Aluminum Alloy
47	Screw	1	Stainless Steel
48	Pistol Grip	1	Dupont Nylon
49	Screw	1	Stainless Steel

ASSEMBLY AND COMPONENTS



**FOR MORE INFORMATION CONTACT YOUR  
DISTRIBUTOR**

WFR Wholesale Fire & Rescue Ltd.

129 - 7155 57 St. SE

Calgary, AB

T2C 5W2

CANADA

1.800.561.0400 | [www.wfrfire.com](http://www.wfrfire.com)